



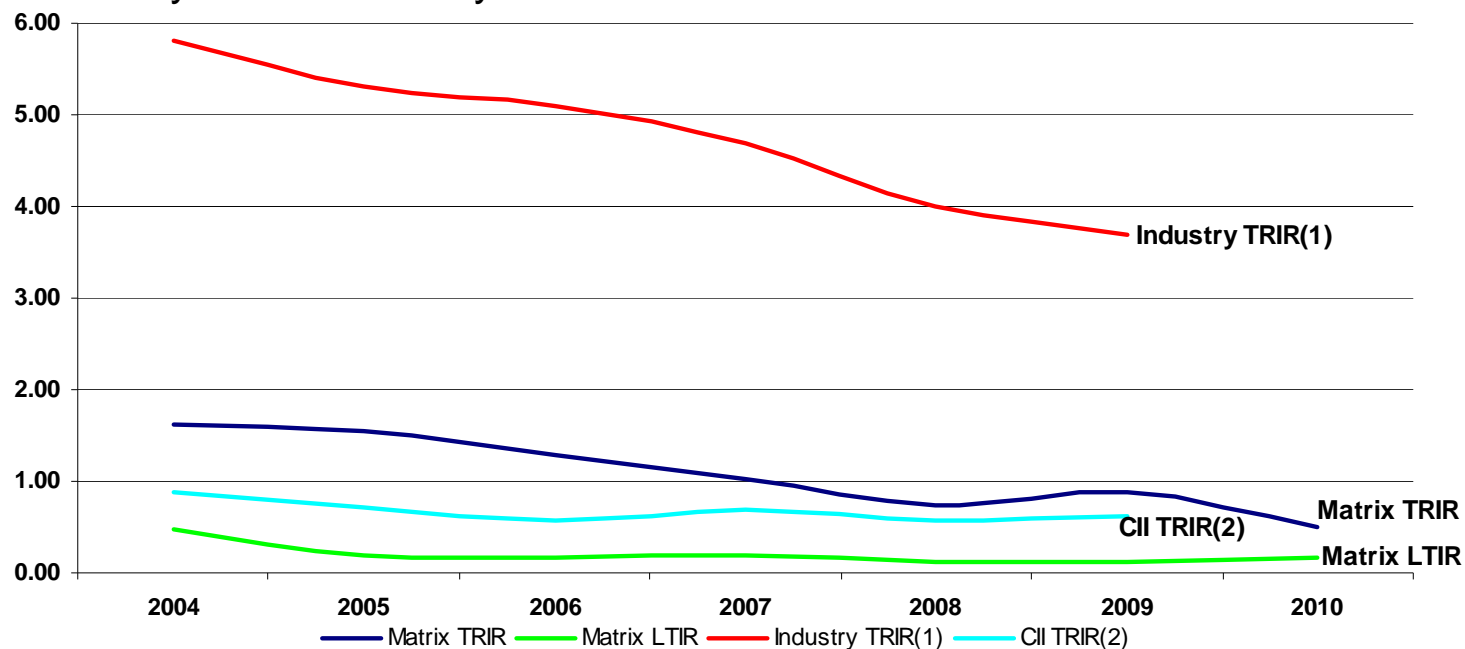
Johnson Rice E&C Conference
June 28, 2011

Safe Harbor Statement

This presentation contains certain forward-looking statements concerning Matrix Service Company's operations, economic performance and management's best judgment as to what may occur in the future. The actual results for the current and future periods and other corporate developments will depend upon a number of economic, competitive and other influences, many of which are beyond the control of the Company, and any one of which, or a combination of which, could materially affect the results of the Company's operations. Such forward-looking statements are subject to a number of risks and uncertainties as identified in the Company's Annual Report on Form 10-K for the year ended June 30, 2010.

Focus on Safety

- To Achieve “Best in Class” Safety, We Make it Our First Priority
 - Behavioral Based Safety Program
 - Zero Incident Safety Culture
 - Pre-Employment Drug & Alcohol Program
 - Safety Incentive Program
 - Industry Certified Safety Professionals

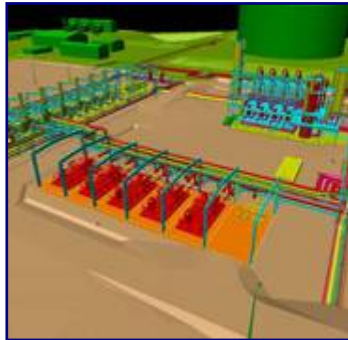


(1) Bureau of Labor Statistics data on total injuries rate for Heavy & Civil Engineering Construction industry (data through 2009)

(2) Construction Industry Institute TRIR for “Best in Class” Companies (data through 2009)

Company Profile

- Headquartered in Tulsa, OK with Regional Offices in the US and Canada
- Merit & Union Operations with Licenses in 50 States & 4 Canadian Provinces
- Current Employment Exceeds 3,000 Highly Skilled Workers
- Founded in 1984 with Public Listing on NASDAQ in 1990



Engineering

Procurement

Fabrication

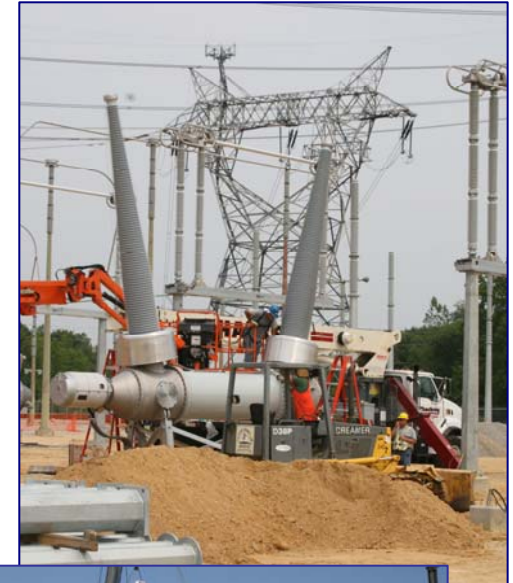
Construction

Repair &
Maintenance

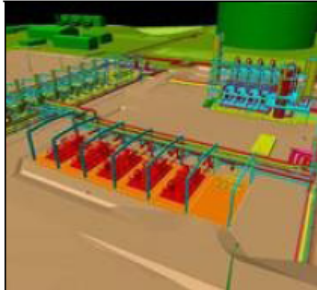
Company Profile

Energy & Industrial Solutions Provider (NASDAQ: MTRX)

- Serving Oil & Gas, Power Generation, and Other Industries
- Business Segments
 - Construction Services
 - Construction & Project Management
 - General Contractor Services
 - Engineering & Design Services
 - Procurement & Fabrication
 - Repair & Maintenance Services
 - Scheduled Maintenance
 - Turnarounds & Outages
 - Engineering, Procurement & Fabrication
- Industry Leader in Specialty Plate and Aboveground Storage Structures



Expertise Creates Competitive Advantage



Engineering



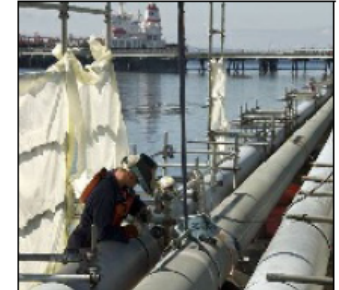
Procurement



Fabrication



Construction



Repair & Maintenance

CORE STRENGTHS

AST: Terminals, Repair & Maintenance, International

Power: Generation, Environmental, Nuclear Containment

Material Handling: Power, Mining & Metals, Raw Materials, International

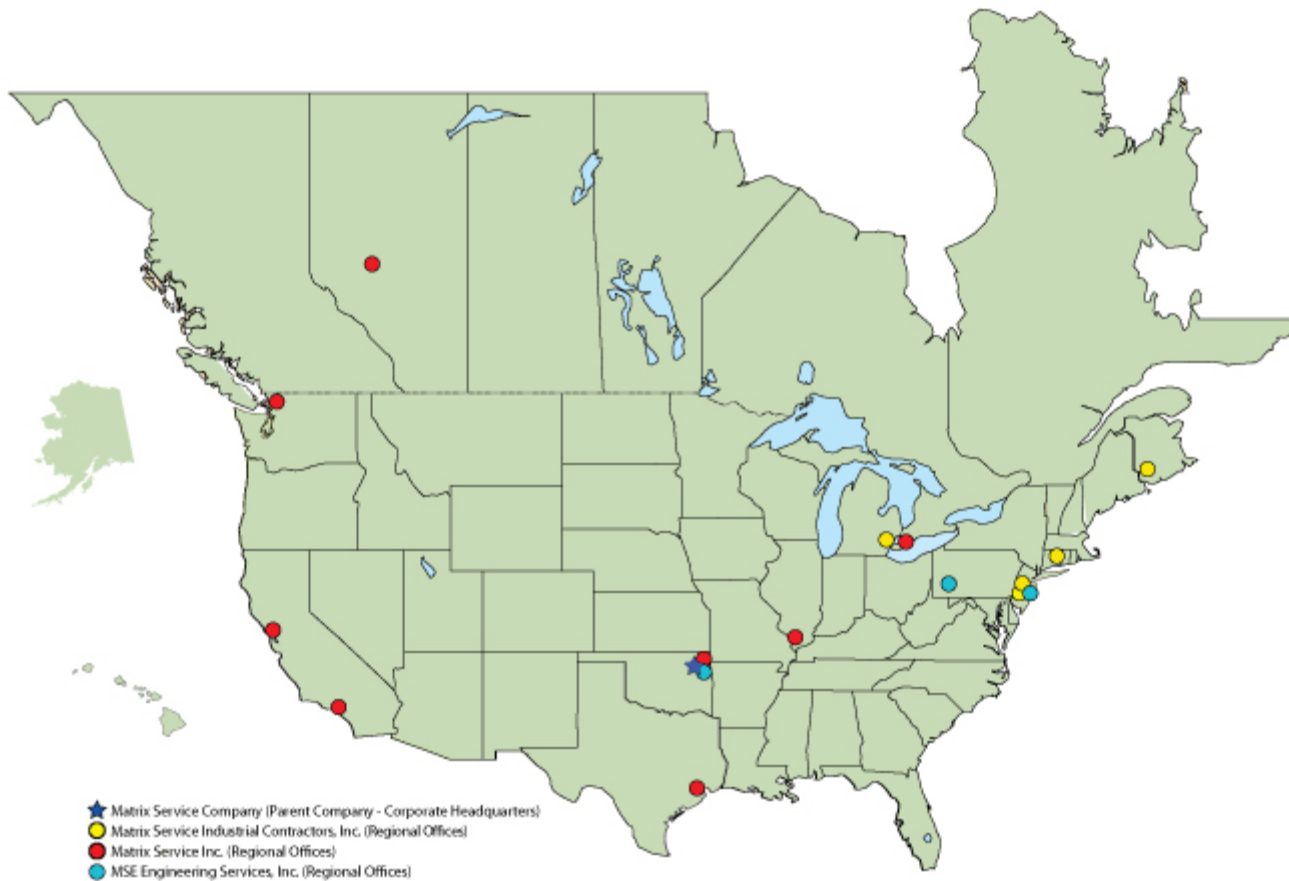
Specialty Vessels & Storage: LNG, Spheres, Low Temp / Cryogenic, International

Oil & Gas: Turnarounds, Capital Construction

Electrical & Instrumentation: Power, Distribution & Transmission

Industrial Cleaning

Broad Geographic Reach



Aboveground Storage Tanks

- Kinder Morgan CA Terminal Expansion & BP Toledo
- Western Canada – Federated and Enbridge Projects Underway
- Alaskan Momentum – Shell / Crowley / PetroMarine Awards
- Diamond Green Diesel – Norco, LA
 - JV between Valero and Darling International
 - Engineering, Construction, and Coating of 11 Storage Tanks



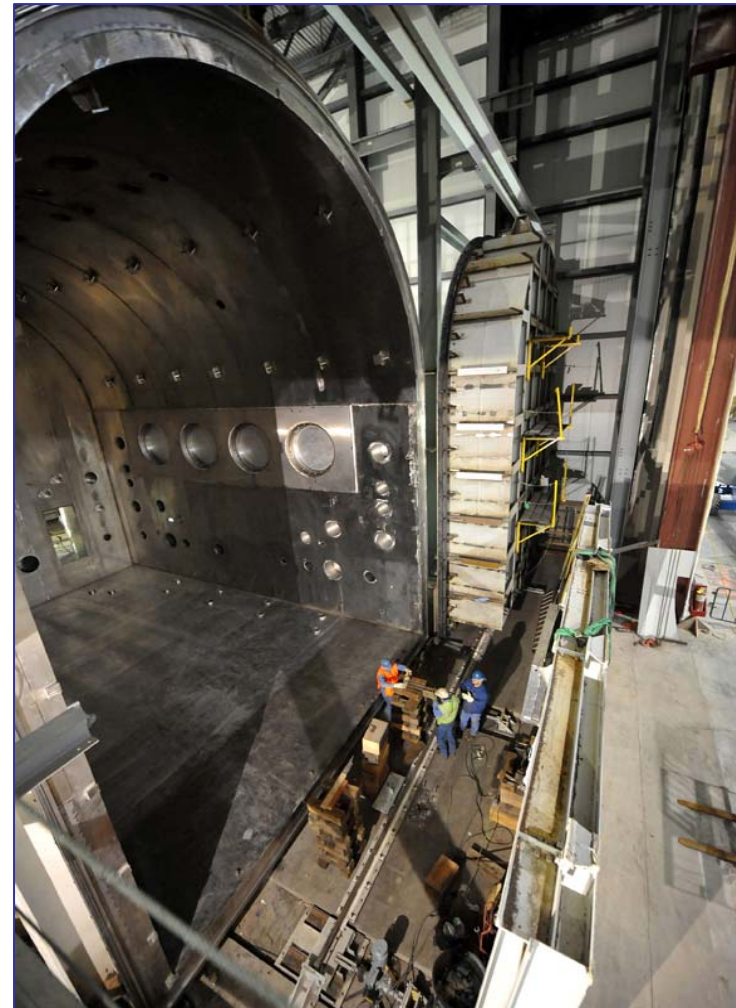
Cushing Hub Crude Storage & Terminal Expansions

- Over 65 Million Barrels of Crude Storage
 - 70% Matrix Service Built
- 40+ Tanks In Progress or Planned for 2011 – 2012
- Projections for 100+ Million Barrels
- Enbridge Terminal Mechanical Work Currently In Progress



Specialty Plate Storage Structures

- Lockheed / USAF – Littleton, CO
 - Thermal Vacuum Chamber
 - Used for Testing Satellites
 - Matrix Turnkey EPFC
 - Projected Completion July 2011
- DynoNobel Cheyenne, WY Ammonia Tank Currently In Progress
- Completion of Magellan East Houston Butane Terminal Expansion



Refinery, Turnaround, and Maintenance

- Repeat Turnaround and Capital Work
 - BP Cherry Point (WA)
 - BP North Slope (AK)
- Conoco Ferndale (WA)
 - First Time Plant Wide Turnaround Award
- Exxon Joliet (IL) and Frontier Cheyenne (WY) Underway
- Holly Tulsa (OK) and Suncor Commerce City (CO) Relationships Strengthening



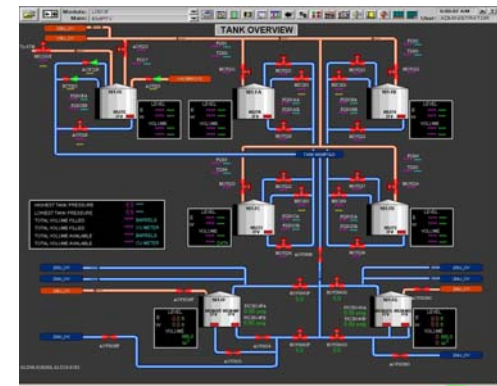
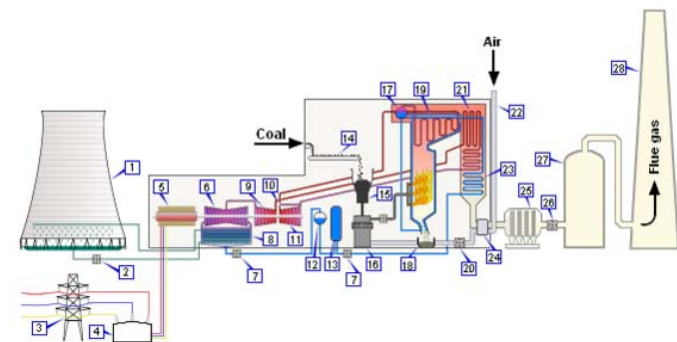
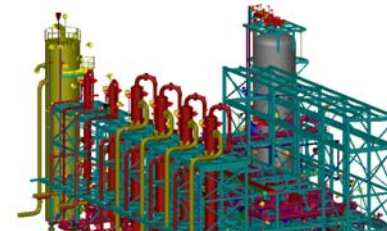
Power

- Conoco Bayway Refinery – Linden, NJ
 - Mechanical Installation
 - Replace CO3 Boiler With New Foster Wheeler Unit
 - Scope
 - Boiler, Convection Sections, Burners, Piping, Structural Supports, Platforms
 - Craft Staffing 10-60 Peak
- PSEG Hudson Generating Station – Jersey City, NJ
 - Installation of Air Quality Control System (AQCS)
 - Construction of Steel Plate Structure of Selective Catalytic Reactor (SCR)



Engineering and Technical Services

- Offices in Tulsa, Pittsburgh, and Mahwah, NJ
- 100+ Engineering and Drafting Staff
 - 60 Professional Accreditations
- Specialty Steel Plate Structures, AST, Cryogenic Storage, Material Handling
- Front-end Engineering and Design (FEED) Studies
- Permitting Support
- Detailed Construction Engineering
- Design of Specialized Erection Equipment
- Commissioning and Training
- Fitness For Service Evaluations



Demand Drivers for Energy & Industrial Markets

Petroleum

- Market sentiment indicates resumption of terminal & storage infrastructure build over multiple years
- Maintenance spending expected to pick up in the near-term although competition remains high

Natural & Industrial Gas

- LNG projects on horizon with potential for export terminals in the US
- Large capital investment expected to develop natural gas shale deposits
- North America is gas positive creating opportunities through out the gas value chain

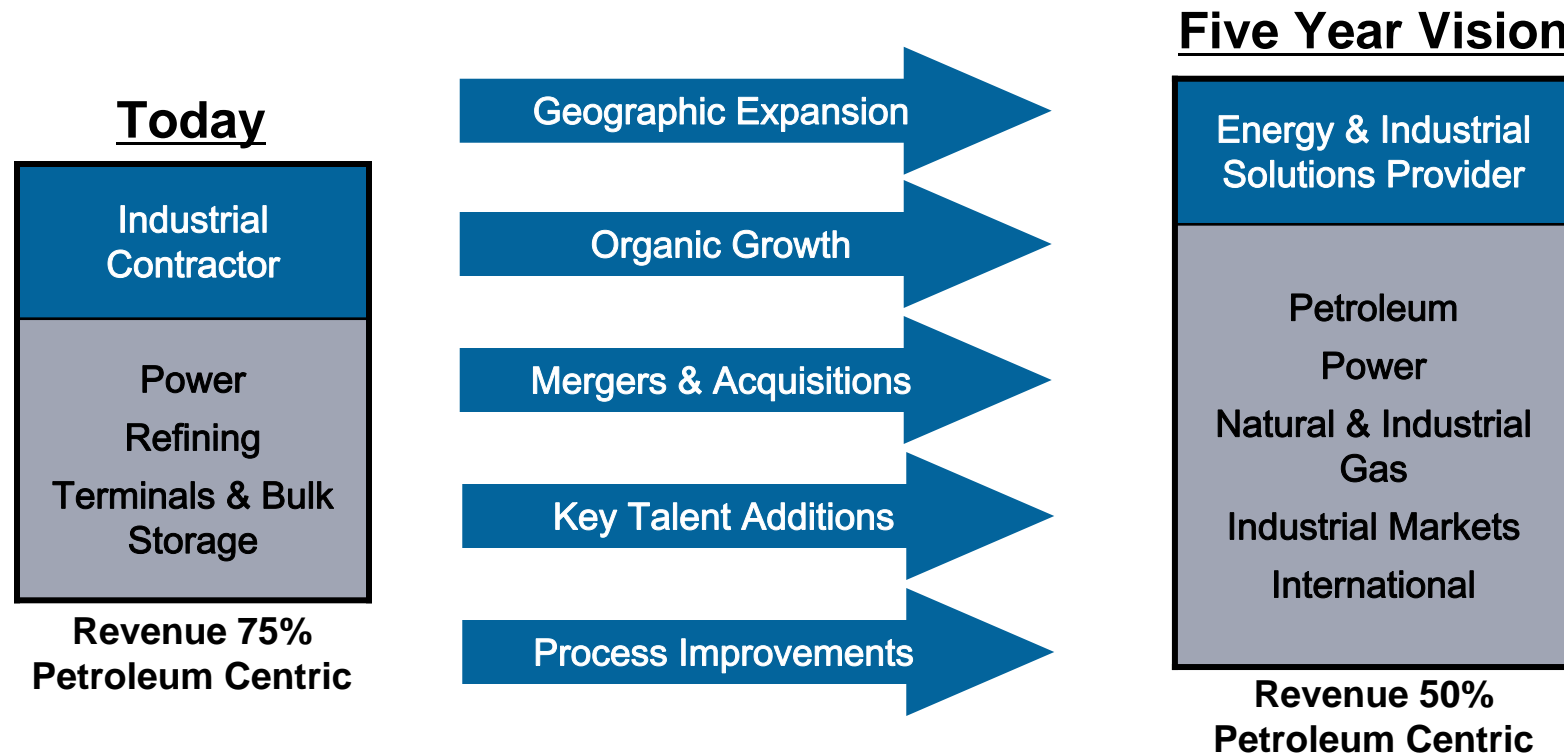
Power

- Congestion & system reliability requirements will drive opportunities in the power delivery market
- Long-term demand growth will drive investment in generation capacity from multiple sources
- Nuclear plant modifications and new processing units required to meet demand – Matrix Service has both N & NR stamps

Environmental & Air Pollution Control

- Air quality mandates will drive need for installation of backend technologies
- Updated EPA requirements should be finalized by the end of the year, driving growth in environmental retrofit demand

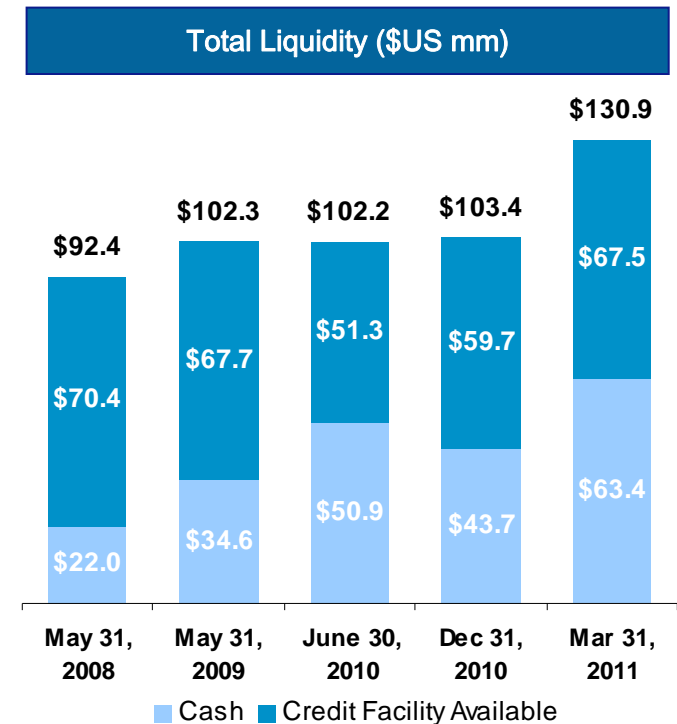
Growth Strategy



Our strategy is to expand and diversify our service offering to become a leading energy & industrial solutions provider in North America & select international markets

Solid Financial Position

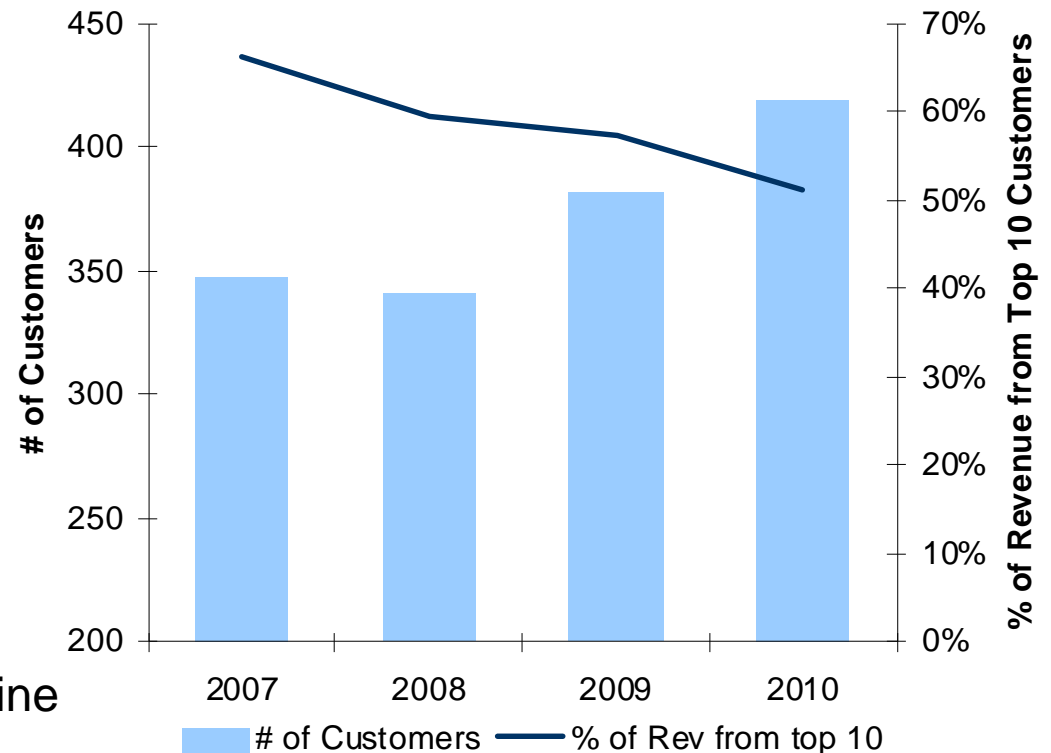
- Strong Balance Sheet & Cash Flows
 - Disciplined Project Selection & Execution
 - Management of Overhead Costs & Working Capital
 - Low Capital Expenditure Requirements
 - No Debt with Strong Liquidity
- Bonding Capacity of \$400mm Supports Growth Plans & International Expansion
- Focus on Risk Management



Financial Strength & Flexibility to Capitalize on Growth Opportunities

High Quality Customer Base

- Including
 - Chevron
 - Holly
 - PSE&G
 - Tesoro
 - BP
 - Kinder Morgan
 - Sunoco
 - Enbridge
 - ConocoPhillips
 - Magellan
 - Exelon
 - Plains All American Pipeline
 - PPL



Financial Trends

Amounts in millions (except per share data)

Fiscal Year Ended ⁽¹⁾	Guidance FY 11	June 30, 2010 ⁽²⁾	May 31, 2009	May 31, 2008 ⁽³⁾
Consolidated Revenues	\$630 to \$650	\$550.8	\$689.7	\$731.3
EPS Fully Diluted	\$0.60 to \$0.75	\$0.18	\$1.16	\$0.80
Backlog	\$383.9 ⁽⁴⁾	\$353.2	\$401.1	\$467.3

(1) The company changed its fiscal year end to June 30 from May 31 effective July 1, 2009

(2) The company recorded a pre-tax losses in fiscal 2010 related to non-routine charges of \$9.9 million and a job loss of \$5.4 million

(3) The company recorded a pre-tax loss of \$20.8 million in fiscal 2008 on the Gulf Coast LNG project

(4) Total as of March 31, 2011

Investment Highlights

- Safety Focused Culture
- Experienced Management Team
- Disciplined Risk Management Processes
- Solid Financial Position & Strong Cash Flow
- Broad Geographic Reach in North America
- Long-Term Relationships with a Diverse, High-Quality Customer Base
- Expertise in Engineering, Fabrication, Construction & Maintenance Services in Core Energy & Industrial Markets
- Long-Term Demand for Energy & Industrial Services
- Positioned to Achieve our Growth Strategy





***MATRIX SERVICE
COMPANY***

Experienced Management Team

NAME	TITLE	BUSINESS UNIT	INDUSTRY EXPERIENCE
John Hewitt	President & CEO	Matrix Service Company	30 Years
Joe Montalbano	Vice President & COO	Matrix Service Company	39 Years
Kevin Cavanah	Vice President & CFO	Matrix Service Company	21 Years
Nancy Austin	Vice President, HR	Matrix Service Company	22 Years
Jason Turner	Vice President & Treasurer	Matrix Service Company	18 Years
Matt Petrizzo	President, MSICI	Operations, Union	27 Years
Al Fosbenner	Vice President, MSICI	Operations, Union	36 Years
Jim Ryan	President, MSI	Operations, Merit	31 Years
Bob Long	Vice President, MSI	Operations, Merit – Gulf Coast	45 Years
Brad Rinehart	Vice President, MSI	Operations, Merit – Midwest	30 Years
Bill Sullivan	Vice President, MSI	Operations, Merit – West Coast	30 Years
Kevin Durkin	Vice President, MSI	Business Development	31 Years

Matrix Service is led by a committed, experienced senior management team with average relevant industry experience of more than 30 years each