



THERMAL VACUUM CHAMBERS, A LEGACY OF EXCELLENCE

Matrix Service provides engineering, procurement, and construction (EPC) solutions with industry-leading expertise in thermal vacuum chambers. Over the last 55 years, Matrix PDM Engineering has designed over half of the large, field erected thermal vacuum chambers in the United States and during the past 10 years, Matrix PDM and Matrix Service has been the leading designer and builder of large, thermal vacuum chambers.

Safety. Integrity. Positive relationships. Stewardship. Delivering the best. It is these core values that have forged our reputation for excellence.

A HIGHER STANDARD IN CONSTRUCTION



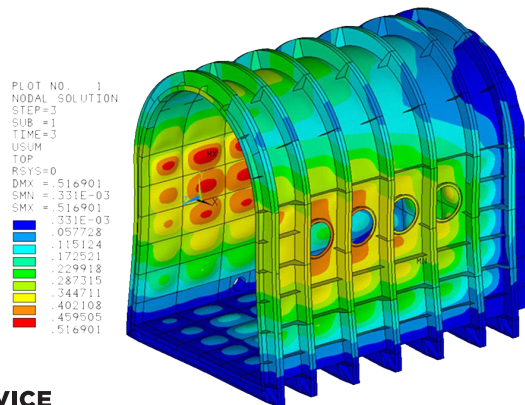
matrixservice.com | 1 866 367 6879

MATRIX HAS BUILT A SOLID REPUTATION IN THE THERMAL VACUUM CHAMBER FIELD

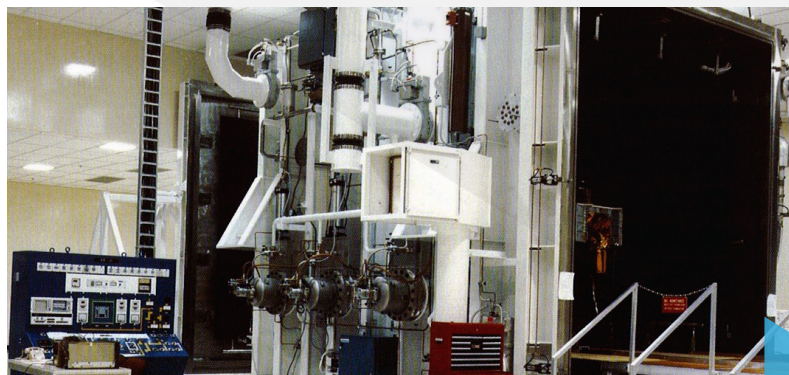
With over 55 years of experience offering technical expertise in the design, construction, and installation of large, field erected thermal vacuum chambers, Matrix has built a solid reputation for reliable performance and excellence through the completion of many innovative projects including mailbox-shaped, rectangular, and cylindrical thermal vacuum chambers.



In 2012, Matrix completed the EPC of a 26' wide x 34' tall x 40' long horizontal mailbox-shaped thermal vacuum chamber. Currently, Matrix is working on the EPC of two large mailbox-shaped thermal vacuum chambers for space simulation facilities.



Matrix specializes in large, field-erected chambers and systems for space simulation testing, fusion energy research, and manufacturing facilities. These facilities can be designed with a variety of vacuum levels, thermal environments (both cryogenic and elevated), degree of vibration isolation, cleanliness levels, and payload handling systems - all tailored to customer requirements. Our chambers can be designed for installation into existing buildings or for new greenfield sites.



Markets that Matrix serves include aerospace, government research, and manufacturing. Matrix can provide a complete tested turn-key facility including all required engineering disciplines (process engineering, civil/structural, piping, electrical, instrumentation, and control).



MATRIX SERVICE

For more information
please contact

1 866 367 6879
matrixservice.com